



Condense | MaxilloPrep™

System for bone condensing and bone spreading

MaxilloPrep™ Condense is a system for bone condensation and bone spreading with Condense screws made of pure titanium developed by Dr. Stefan Neumeier.

Bone condensing treatments are envisaged in cases where, due to a spongy bone structure, sufficient contact between implant and bone is not given. To this end, the MaxilloPrep™ Condense screws are inserted into a small, previously prepared pilot hole with a hand wrench. The screws are then screwed in and out in ascending order, until the required target size is reached. This will ensure optimum primary stability of the subsequently inserted implant.

The MaxilloPrep™ Condense screws can also be used for bone spreading. This allows the loss of substance caused by the drilling of perforations into the implant site to be reduced to a minimum.

The Condense screws are available in 5 sizes; sizes 4 and 5 also come with a triangular cross-section for condensation and expansion of extremely hard bones. All screws are made of pure titanium and designed for multiple use.

A precise multi-start thread allows easy penetration into the first 5 mm of the bone. The shape of the screw is initially cylindrical, then turning into a tapered shape with thread flanks (up to a total length of 15 mm). These thread flanks exert effective condensing pressure on the bone. The penetration depth can be visually controlled at all times, thanks to depth marks placed in intervals of 2 mm starting at 8 mm from the tip of the screws. These depth marks are easily recognizable because the lasered colour of the surface alternates between light and dark every 2 mm. The round end of the Condense screws safely protects from inadvertent perforations. Penetration into the bone may also be assisted by percussion, i.e. by gently hammering the screw into the bone.

Advantages:

- Gentle bone condensation
- Non-traumatic treatment
- Perfectly coordinated system components
- Uninterrupted depth marks on the Condense screws, placed at 8, 10, 12 and 14 mm

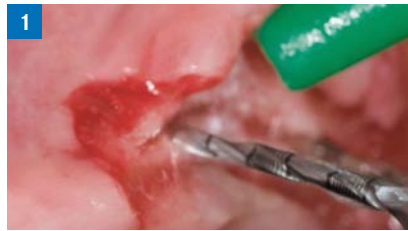
Product range

186A Centring bur

- This sharp centring bur with triangular tip allows exact centring of the operative site. The use of this bur is optional.

Stainless steel

⌚_{max.} 100 000 rpm ⌚_{opt.} 800 rpm



210L16 Pilot drill

- To drill the initial pilot hole
- Excellent tip for exact penetration
- Sharp toothing, outstanding chip removal, lasered depth marks starting at 8 mm from the tip

Stainless steel

⌚_{max.} 6 000 rpm ⌚_{opt.} 1 000 rpm



538 Manual wrench

For screwing in the Condense screws

- Effective insertion
- The screw is safely retained due to mechanical clamping – clicks into place
- To transmit a higher torque, the hand wheel REF 454 or the torque ratchet REF 9820A can be attached



Condense screw 558L15

Made of pure titanium, available in 5 sizes

Condense screw 559L15

Two additional special screws for hard bones

- Multi-start thread for speedy insertion
- Thread also suitable for insertion assisted by percussion

Kit 4596

5 screws 558L15 (size 1 – 5)

2 screws 559L15 (size 4 – 5)

186A Centring bur with triangular tip

210L16.205.013, 018 Pilot drill

538 Hand wrench

538.204 Mechanical wrench

537 Insert tray

534 Sterilization container

Kit 4597

537 Insert tray

534 Sterilization container

(without instruments)

538.204 Mechanical wrench

- For mechanical insertion after the initial manual positioning of the screw



558L15.1 (1.6 – 2.4 mm)



558L15.2 (2.2 – 3.0 mm)



558L15.3 (2.8 – 3.6 mm)



558L15.4 (3.4 – 4.2 mm)



558L15.5 (4.0 – 4.8 mm)



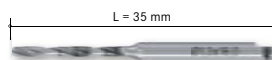
559L15.4 (3.4 – 4.2 mm)



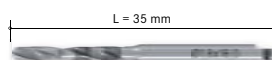
559L15.5 (4.0 – 4.8 mm)



186A.204.001



210L16.205.013



210L16.205.018



538



538.204



Kit 4596